

# Preparing Image files for self Printing

Written and tested by: Juraj Dolanjski, copyright © 2017

## Note:

If you are planning to do any adjustments to the file (colour, contrast, brightness), your computer (monitor) MUST be colour calibrated. If it is NOT, you cannot make any judgement of the parameters above. Your printing results will be unpredictable.

If your system is not colour calibrated, you can still print (but do not adjust colours in the computer), as long as what came from the camera can be trusted and as long as you had correctly set white balance in camera BEFORE shooting.

## Why Print?

- Feeling of satisfaction, seeing your printed work
- To get the highest resolution from the camera
- To exhibit
- To give a gift
- To donate
- To preserve the file content for the future

## Printing Steps

- Calibration
- Setup Photoshop
- Edit your image file
- Download printer profile
- Install printer profile
- Perform soft proofing
- Size the image file
- Send to the printer

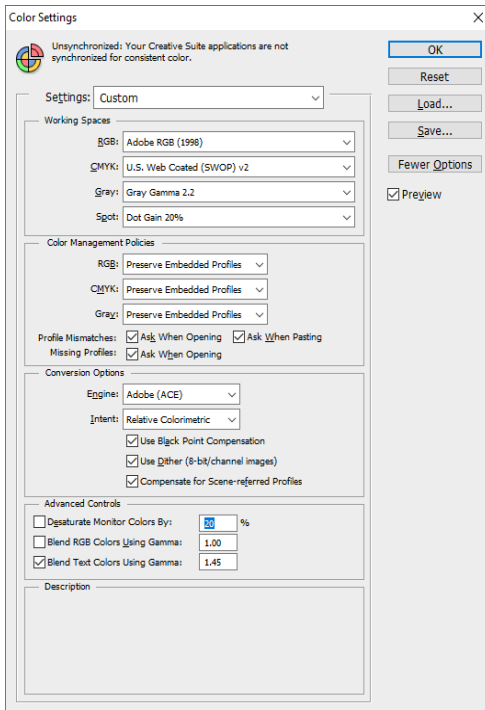
## Calibration

- You need hardware and software, like Spyder
- Perform calibration every 3 months

## Setup Photoshop

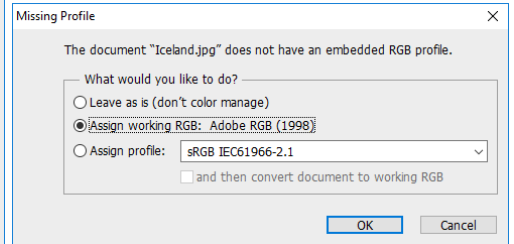
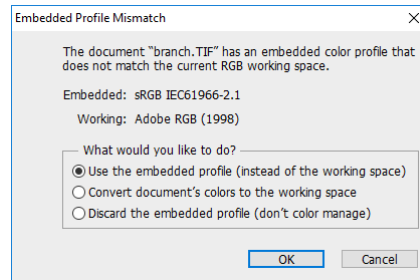
- Open PS, select Edit, Colour settings
- Check that all settings are as per next screen





## Assign profile to your image

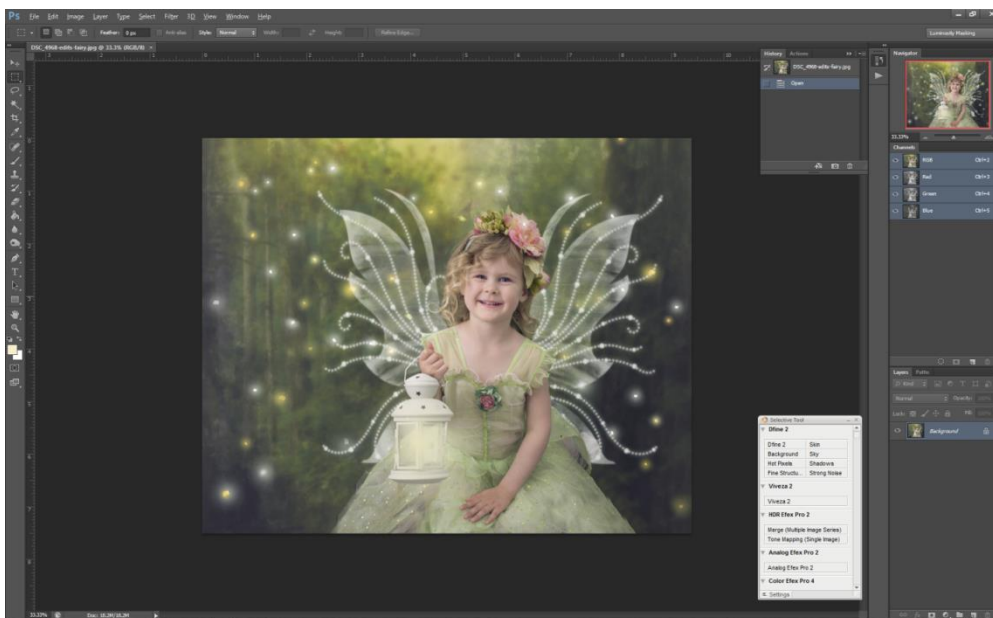
- If your camera allows, set it for Adobe RGB profile
- This is a wider gamut of colours that is more suitable for printing
- Open the image you will print
- If you see this message:



- If image colour balance and contrast do not look right
- Select Edit, Assign Profile and select sRGB

## Edit your image file

- Open up image file in Photoshop or similar app
- Do all the editing and adjustments that you wish



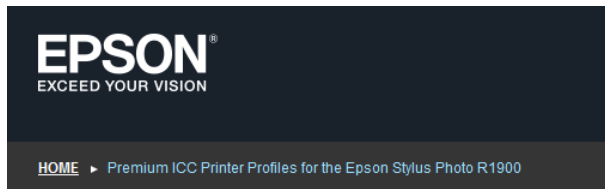
- Save that file with filename-edited
- This is now the Master file that is used for printing

## Before you start

- Must know the printer model and the paper that will be used, for either self printing or lab printed
- You have to acquire the profiles for that combination
- A profile is a file that determines how colours are to be printed for specific printer-paper combination
- Locate printer profiles for the paper that will be used
- Note that glossy and matte paper require separate profiles
- Download and save those files

For example Epson:

<https://epson.ca/Support/wa00362>

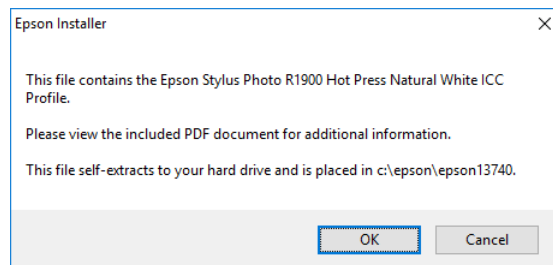
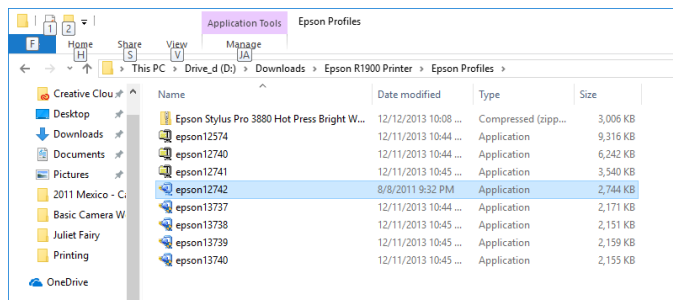


## Download Your ICC Profiles by Media Type

User's Guide to Epson Stylus Photo R1900		PDF	
Glossy Papers	Premium Photo Paper Glossy (formerly Premium Glossy Photo Paper)	Mac	Win
	Premium Photo Paper Semi-gloss (formerly Premium Semigloss Photo Paper)		
	Ultra Premium Photo Paper Luster (formerly Premium Luster Photo Paper)		
Matte Papers	Ultra Premium Presentation Paper Matte (formerly Enhanced Matte Paper)	Mac	Win

## Install printer profile for Windows

- Those profiles must be installed (this only needs to be done once).
- Go to the folder where you saved profile files
- Right click on each and click on Install
- In case of Epson, double click on the profile file and let it install



## Installing printer profiles for Mac

### Mac OS X:

Storing profiles in `/Library/ColorSync/Profiles` allows all users to use them. An alternative area, for users without Admin privileges, is `/Users/<username>/Library/ColorSync/Profiles`. Profiles stored here are available only to the current user. The ColorSync Utility gives access to the details of individual profiles, shows gamut plots, can rename profiles and validates profile structure, among other useful tasks.

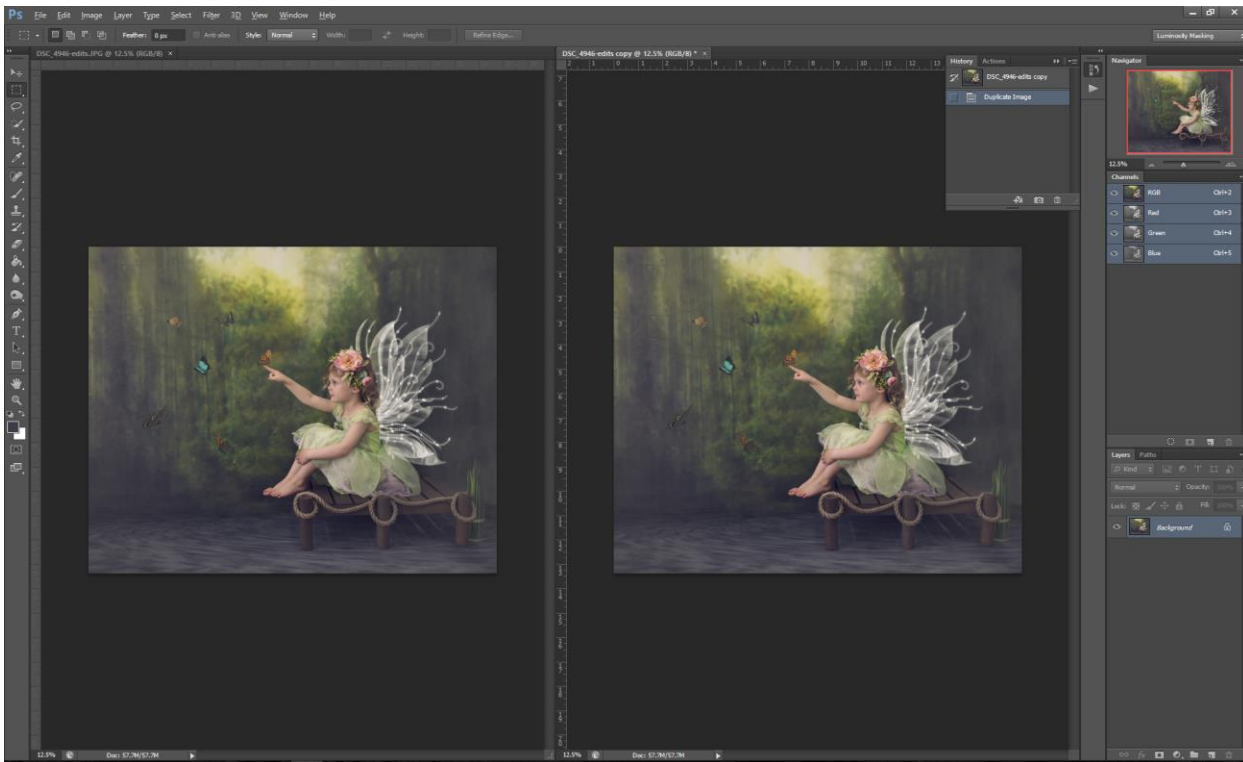
**OSX 10.7.3** (Lion) and above: The system profile folder is hidden by default. Storing profiles in this folder is possible, but requires following the steps [https://www.drycreekphoto.com/icc/mac\\_osx\\_sys\\_profile\\_folder.html](https://www.drycreekphoto.com/icc/mac_osx_sys_profile_folder.html)

**OSX 10.9** (Mavericks) and above: Depending on the printer profile, individual system configuration, and perhaps the phase of the moon, Adobe products (e.g. Photoshop, Lightroom - and particularly the Creative Cloud or CS6 versions) sometimes refuse to recognize profiles installed outside an Adobe-specific location. If a printer profile installed to either the system or per-user folder does not show up from within an Adobe product, move the profile to `/Library/Application`

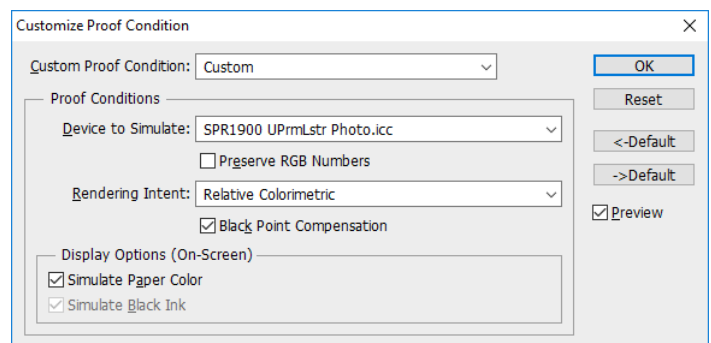
Support/Adobe/Color/Profiles/Recommended. A reboot may be required for the profile to be visible from within the Adobe application.

## Perform soft proofing

- Soft proofing simulates what the printed file would look like, saving on the printer costs
- Launch PS, open original image file
- Make a copy of it
- Go to Image, Duplicate
- Go to Window, Arrange and select 2 up Vertical

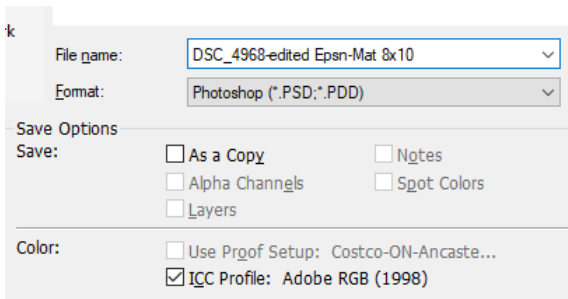


- Original is on the right, copy on the left
- Click on View, Proof Setup and Custom
- Select profile for the paper that you plan on using
- The proof copy on the left became duller
- Go to View, Gamut warning to see if some colours can't be printed at all
- You can now use any adjustments to tweak the proof copy to look like the original (S curve + 10% bright)



## Save the print file

- Typically this file is flat, no layers
- Save it with a meaningful name, Epsn\_10X8\_Gls...
- No Jpeg (in case you wish to continue editing down the road)

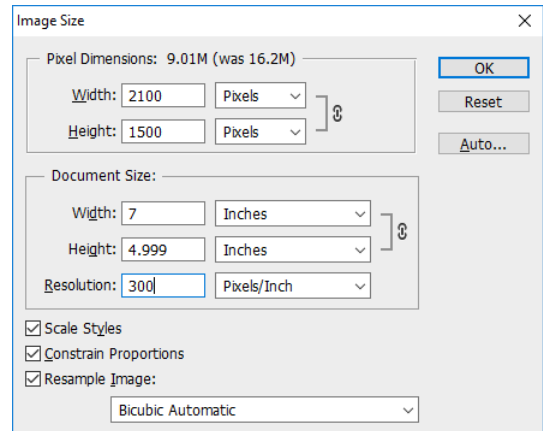
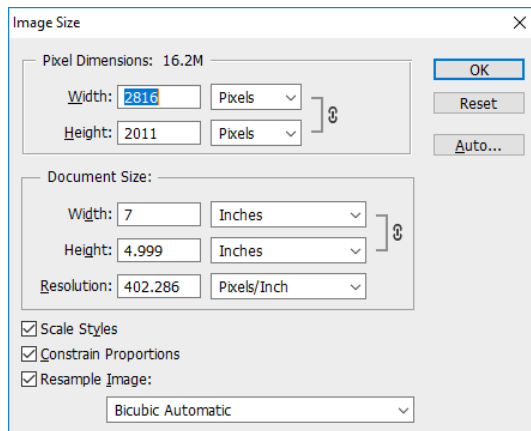


### Size the image file

- Most of the time image must be resized to match printout size
- The file needs to be re-sized, so that the printer does not crop it arbitrarily
- Load previously saved edited file
- Let's say we wanted to print 7 x 5 inch
- Click on Cropping tool and in Customisation area enter 7 in

and 5 in respectively

- Crop area can be moved, resized and rotated
- Hit Enter
- Check file resolution

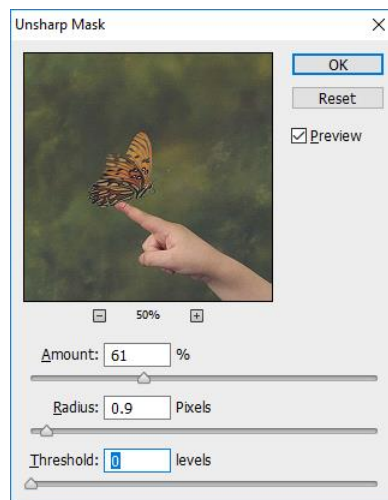


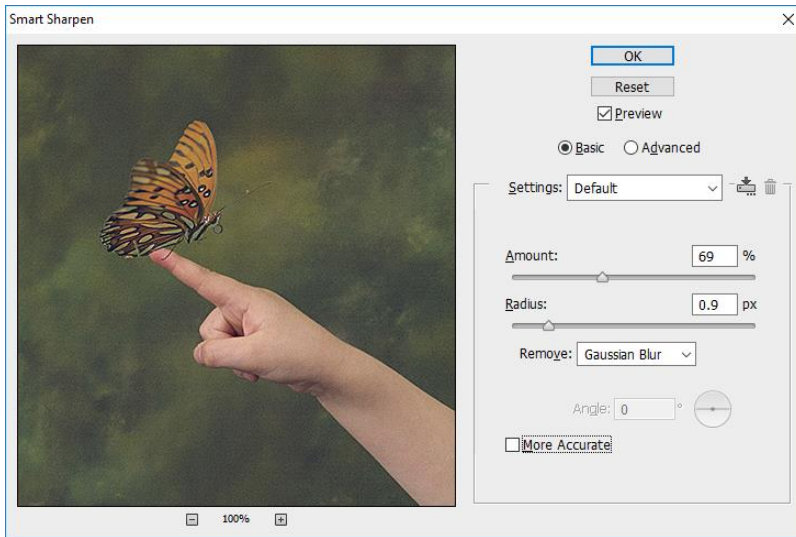
### Standard print sizes (Aspect Ratio)

- 4 X 6 (1.5)
- 5 X 7 (1.4)
- 8 X 10 (1.25)
- 11 X 14 (1.27)
- 16 X 20 (1.25)
- 20 X 24 (1.2)

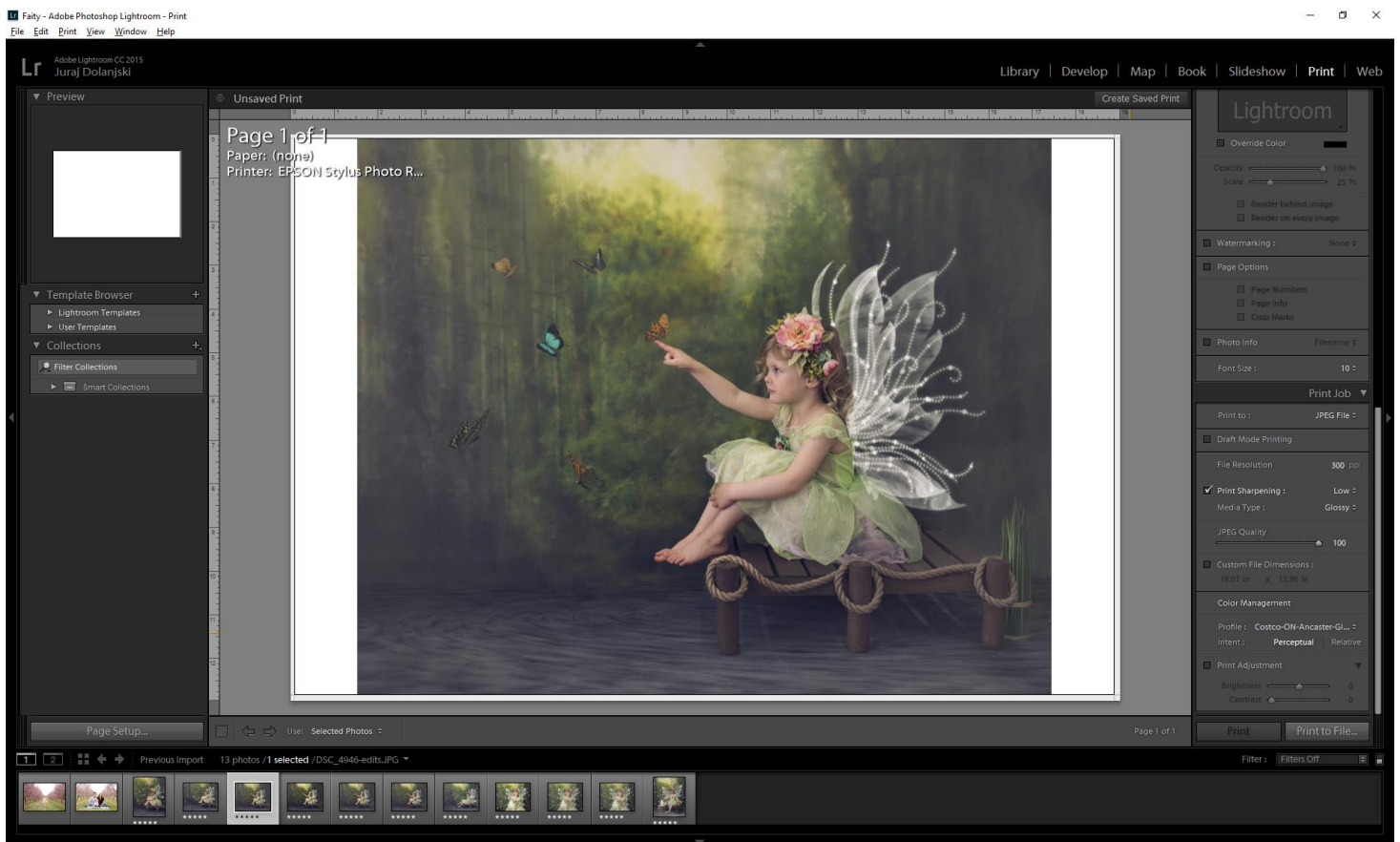
### Sharpen/save print file

- Print file must be sharpened
- Matte paper = more sharpening
- Glossy paper = less sharpening





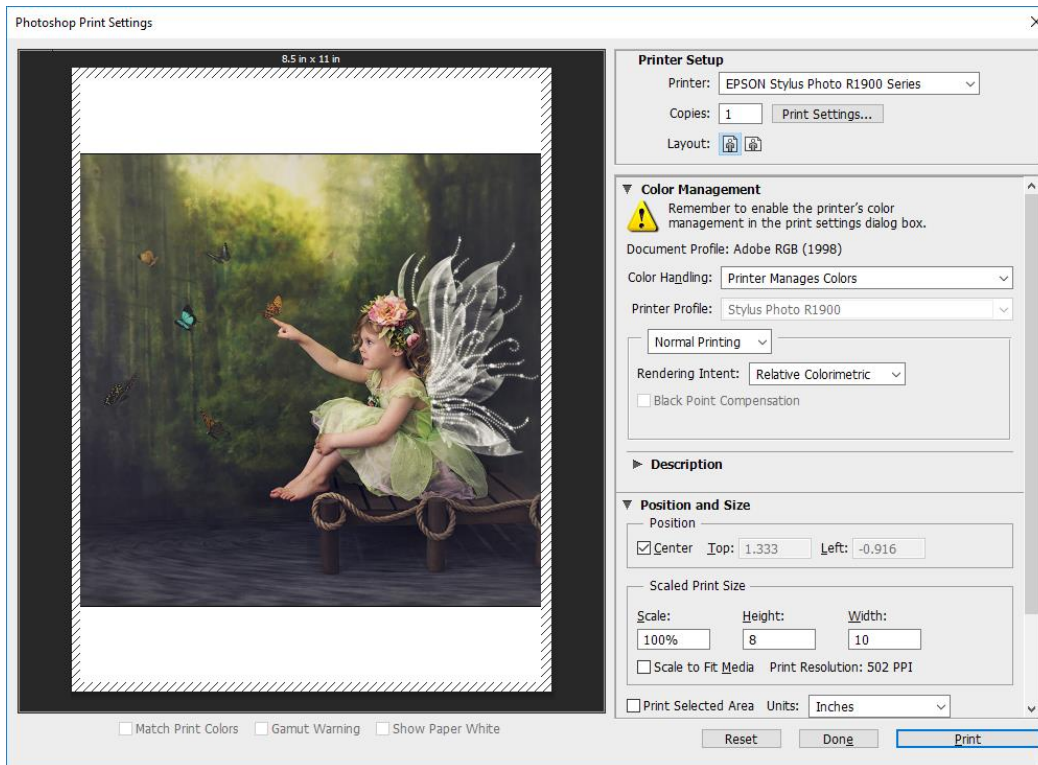
If you use the Lightroom for printing, it is more intelligent than Photoshop. It will automatically sharpen your image, depending on what you use it for.



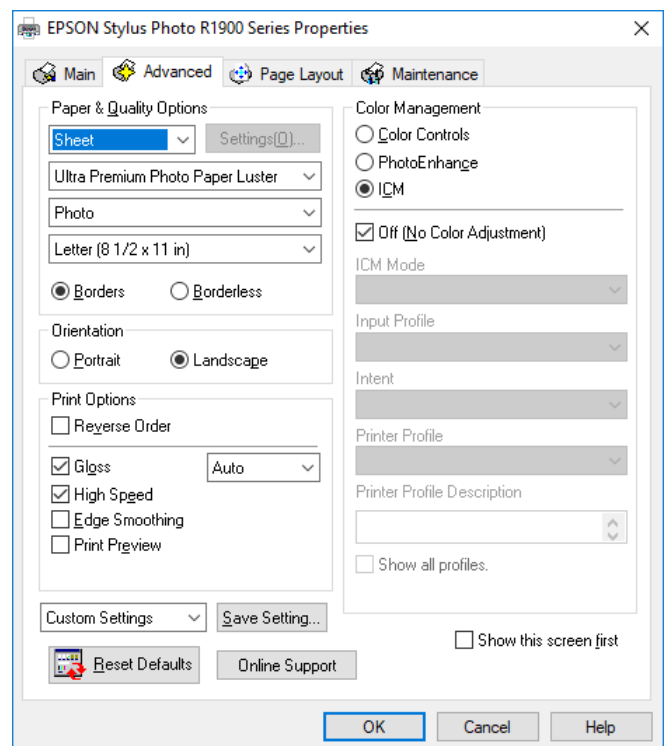
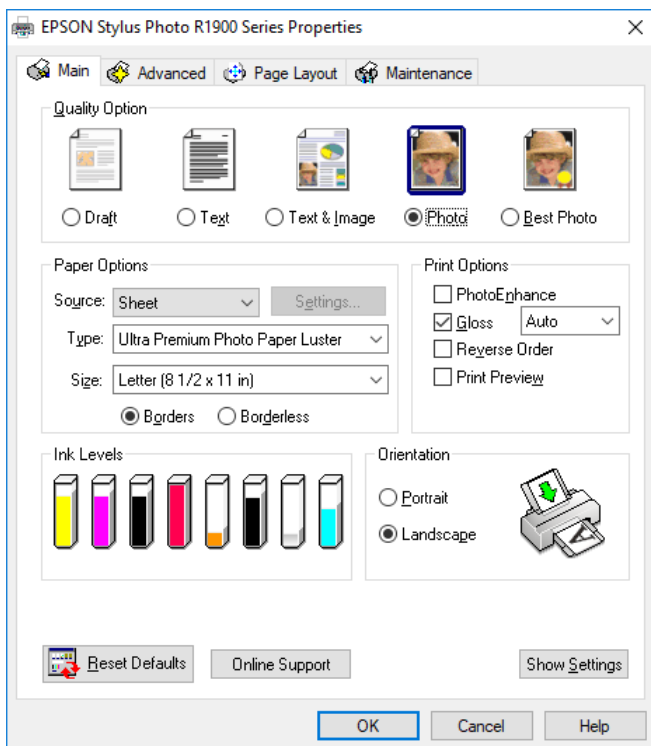
## Open the image file

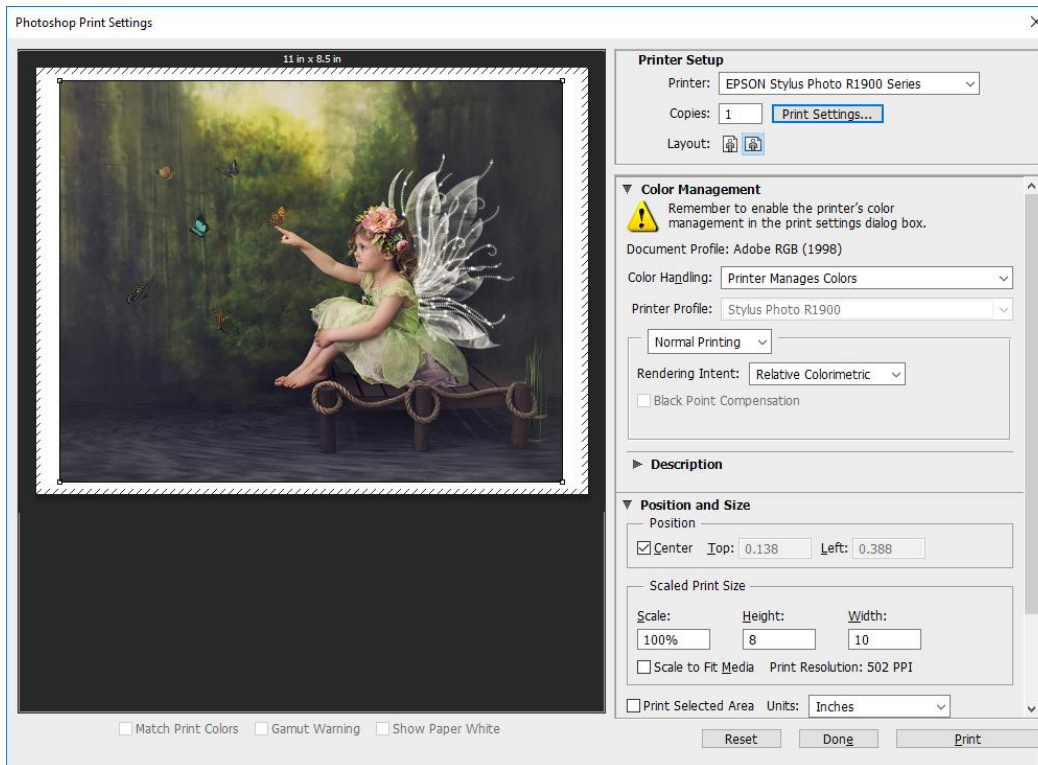
- Previously saved, sized and colour proofed
- Click on File, Print



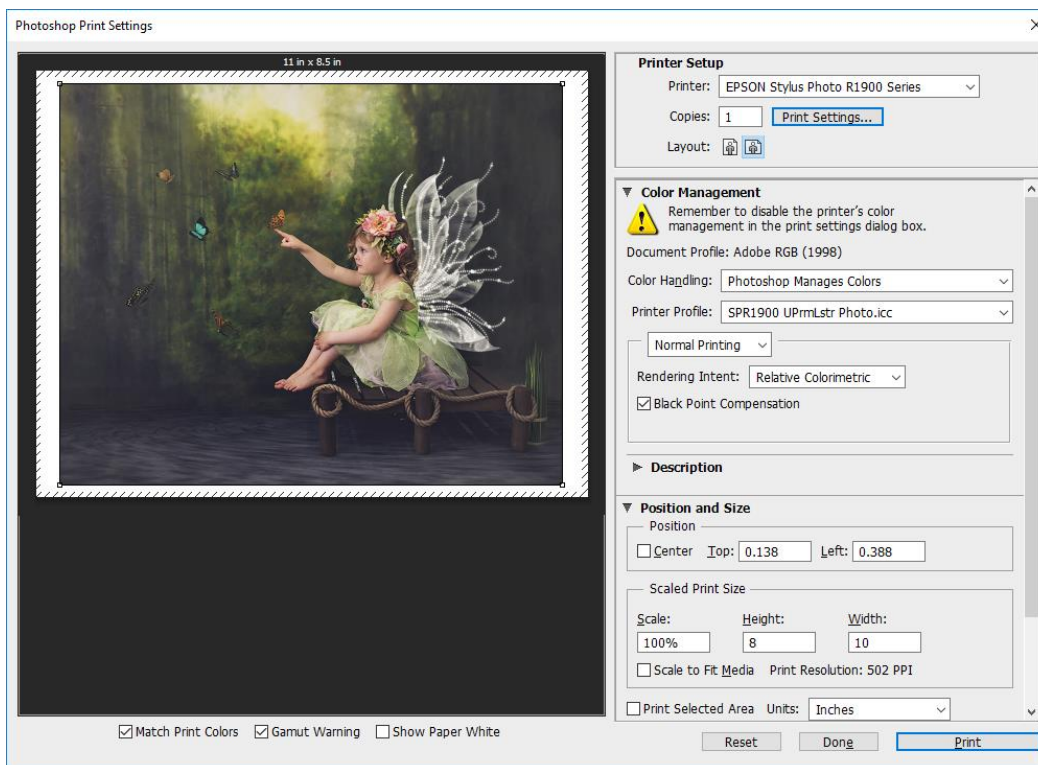


- Click on Print Settings and the Advanced
- You MUST turn off printer colour management (ICM, Off)
- Make sure paper matches the file profile
- Double check all or make changes
- OK





- Make sure Photoshop is setup for Colour Handling
- Click on Printer Profile and Select proper profile



- Click on Print
- That's it! Enjoy!